

**PHENOLIC**

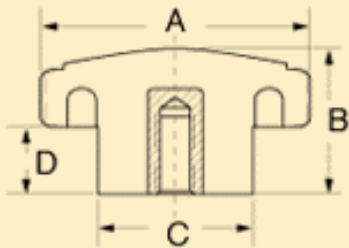
more knurled clamping knobs >>

**Material-** Call for material specifications  
**Insert-** Brass  
**Projecting Stud-** Steel, zinc plated

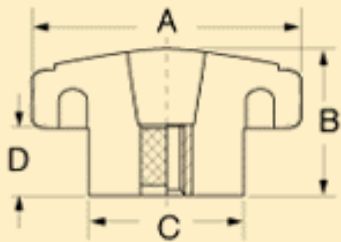
KNURLED CLAMPING



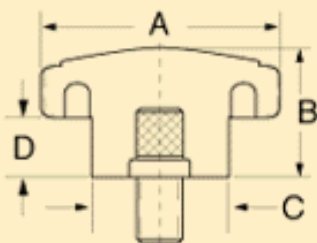
Threaded Insert



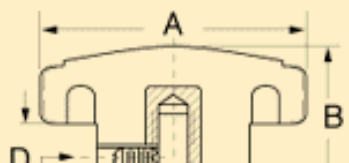
Threaded Insert Thru Hole



Projecting Stud



Threaded Insert w/Slotted Set Screw



Threaded Insert

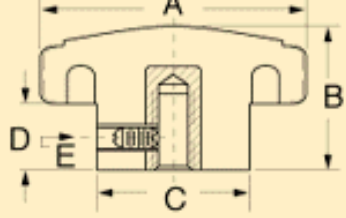
Part No.	Insert	
	Thread	Depth
3050-A	5/16-18	1/2
3050-B	3/8-16	1/2
3050-T	10-24	3/8
3050-U	3/8-24	5/8
3050	1/4-20	3/8
1 "B" = 3/4, "D" = 3/8		

Projecting Stud

Part No.	Stud		Max Length
	Thread	Length	
3050-C	1/4-20	9/16	4-1/2
3050-D	5/16-18	3/4	4-1/2
3050-E	3/8-16	7/16	4-1/2
3050AD	3/8-24	3/4	4-1/2
3050AH	5/16-18	1	4-1/2

Hole or Bushing w/ Set Screw

Part No.	Hole		SS	"E"



	Dia.	Type		
3050-K	1/4	BB	8-32	7/32
<b>BB- Brass Bushing</b> <b>PH- Plain Hole</b> <b>*1/4" "D" Shaft with spring</b>				

[← back](#)